

# MIRRORSTONE

LIGHTING SPECIALIST

## **Easilight 75W RGB Dimming LED Driver (Wi-Fi + 2.4G)**

MS-EZI-WL3-P75

# 1. Features

This product uses WIFI, Bluetooth, and 2.4G wireless transmission technology, while also boasting a strong anti-interference ability.

The combined WIFI and Bluetooth network will greatly enhance your experience with your lights, and ensures extra stability. If your router fails, then the Bluetooth ensures you can still control your lighting at close range.

Once you've connected this receiver to the **MiBoxer Smart app**, you'll be able to use wireless dimming, group control, scene control, timing control, music movement, biorhythm, sleep plans, wake plans, one key execution, automation and a whole host of other functions.

It also supports a more traditional 2.4G remote control if you like.

## RGB LED Lights



16 million colours



Mix red, green and blue light to adjust colour temperature



Dimmable & saturation adjustable



2.4G RF wireless transmission technology



WiFi compatible for long range control



Auto-transmitting and synchronisation (with remote)



Device sharing



Tap-To-Run & automation



Timer settings



PUSH dimming



Remote control distance of 30m



Smartphone app controllable



Supports third party voice control



Group control



Biorhythm



Music synchronisation



Sleep/Wakeup plan



Scene customisation



Do not disturb mode

## 2. Dynamic Mode Table Selection (Remote Only)

**To select Dynamic Mode Table 1:** Turn off the light for 10 seconds, then turn it back on. Within 3 seconds of turning it back on, press the S+ button 5 times. The blue indicator light will blink 3 times slowly. This table is the default.

**To select dynamic mode table 2:** Ensure the light is powered off for 10 seconds, then turn it back on. Within 3 seconds, press the S- button 5 times. A yellow light will blink 3 times slowly.

### Dynamic Mode Table 1 (Default)

Number	Dynamic Mode	Brightness/Saturation/Speed
1	Mardi Gras	Adjustable
2	Automatic Colour Change	
3	Sam	
4	Gemstone	
5	Twilight	
6	America	
7	Fat Tuesday	
8	Party	
9	Slow Colour Splash	

### Dynamic Mode Table 2

Number	Dynamic Mode	Brightness/Saturation/Speed
1	Colours change gradually	Adjustable
2	White light change gradually	
3	RGB change gradually	
4	Seven colours jump to change	
5	Jump to change randomly	
6	Red light gradual change + Flash 3 times	
7	Green light gradual change + Flash 3	
8	Blue light gradual change + Flash 3 times	
9	White Light gradually change + Flash 3	

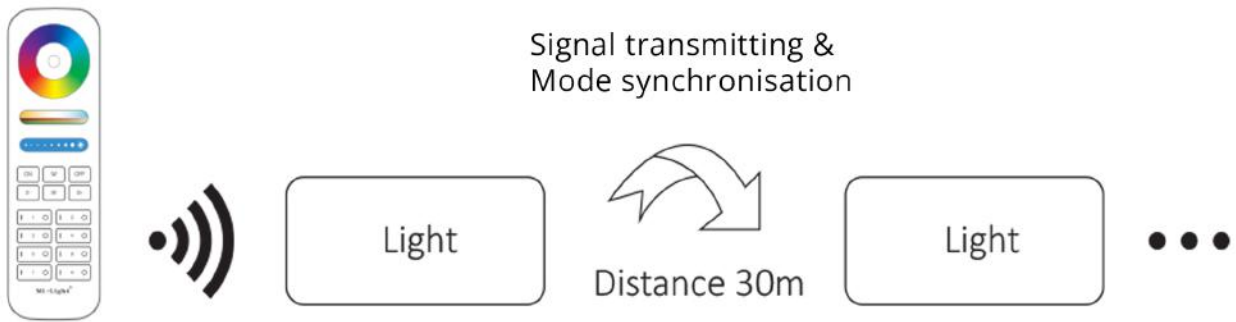
# 3. Auto Transmitting & Synchronisation (remote only)

## Signal Transmitting

One light can transmit the signals from your remote control to another light, as long as the second light is within 30m. This means you have a theoretically limitless range for your lights.

## Modes Synchronising

Different lights can work synchronously even when they are started at different times, as long as they are lit by the same remote, under the same dynamic mode and within 30m of each other.



# 4. Linking/Unlinking

## Linking Instructions



Switch off the light, wait 10 seconds, then switch it on again.

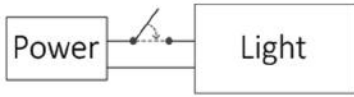
When the light is on, short press the ON button 3 times within 3 seconds.

The light should now blink 3 times slowly to indicate a successful linking.



If the light does not blink slowly, the linking has not been successful. Please switch off the light and follow the above steps again.

# Unlinking Instructions



1

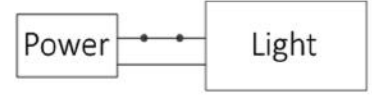
Switch off the light, wait 10 seconds, then switch it on again.

Link / Unlink button



2

When the light is on, short press the ON button 5 times within 3 seconds.



3

The light should now blink 10 times quickly to indicate a successful unlinking.



If the light doesn't blink quickly, the unlinking has failed. Please try again.

**Note:** Lights that haven't been linked don't need to unlink.

## Compatible With The Following Remotes (Sold Separately)



MS-F089



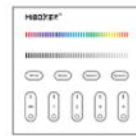
MS-F092



MS-F096



MS-F0B8



MS-00T3



MS-FYL1



MS-EZI-S2

## 5. Push Dimming

- **Short press** the PUSH switch to turn the light on or off
- **Long press** the PUSH for stepless dimming. Long press, release, and long press again to increase or decrease brightness levels

# 6. Smartphone App Control

1. Download and install the **MiBoxer Smart** or **Tuya Smart** app.

You can search for either of these apps in the Google Play Store, or the App Store. Alternatively, you can scan one of the two QR codes here to download it directly.

The first time you open either app, you will need to select the Register button and create an account. If you already have an account, you can log in directly.



MiBoxer Smart



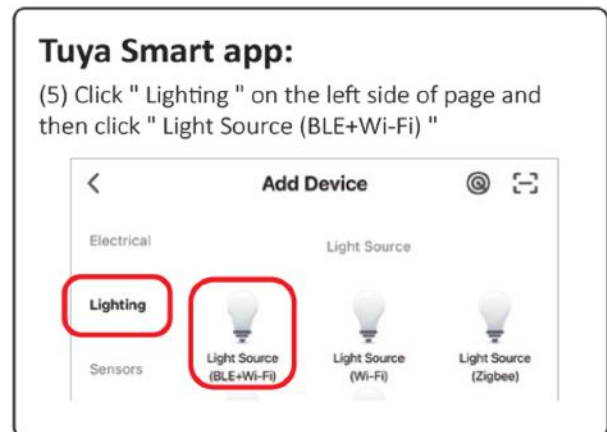
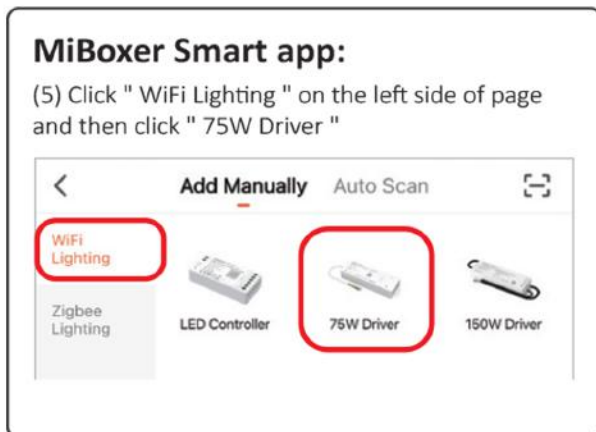
Tuya Smart

## 2. Network Configuration

- Connection your controller to the power supply.
- Confirm the indicator light is flashing quickly (there should be 2 flashes per second)  
If it isn't flashing, there are two solutions:  
Long press the SET key until the indicator light flashes.  
Turn the controller off and on 3 times.
- Connect your phone to your home WIFI network. Make sure it's using the 2.4GHz frequency.



- Open the app and select the + button in the upper right corner of the page.



- Follow the prompts the app provides.

## 7. QR Codes

If you want to learn how to pair your controller with a smartphone app, or with a third party voice control system, you can scan these QR codes to watch an instructional video.



Smartphone app control



Third party voice control

## 8. Attention

1. Please check whether the voltage of the power supply is in accordance with the light.  
Please also check the connection of the cathode and anode, or else you risk damage to the light.
2. Never connect wires with the power on.
3. Only turn on the power when the connection and there is no risk of a short circuit.
4. Only professionals should dismantle this fitting directly.
5. Do not use this light in locations with a lot of metal or strong electromagnetic waves, as this will affect the remote distance.

# MIRRORSTONE

LIGHTING SPECIALIST

[sales@mirrorstone.co.uk](mailto:sales@mirrorstone.co.uk)  
[www.mirrorstonelighting.co.uk/](http://www.mirrorstonelighting.co.uk/)  
86 Scudamore Road Leicester, LE3 1UQ  
+44 (0) 116 321 4121